



Drawing Unit

Prepared for: Miss Iannantuono

Prepared by: _____

March 20, 2014

DRAWING UNIT SUMMARY

Learning Goal

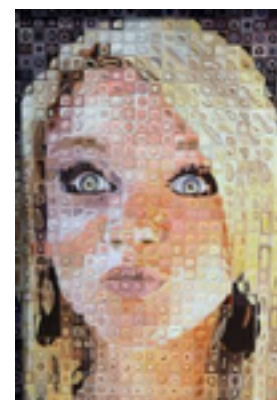
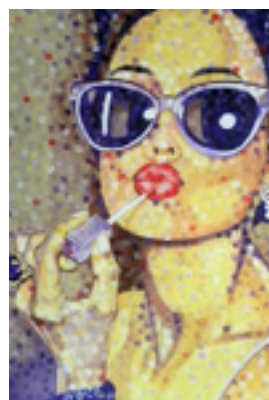
To create a meaningful drawing using pencil crayons or Prisma Colour Rendering Markers.

Project Outline

You have three options to choose from for your drawing unit.

1. CHUCK CLOSE PORTRAIT

Create a facial portrait of yourself or someone else of your choosing using the same grid technique as artist Chuck Close. You will be working with pencil crayon to highlight your use of colour. Think outside the box about colour scheme. You do not need to create an image with a realistic colour scheme, think about combining two colour schemes together for interest.



2. REALISTIC/ABSTRACT COMBO

Create a piece with a realistic object as the focal point. This is contrasted with an abstract background. You can choose to do the focal point using graphite (all levels of pencils) or pencil crayons. The background is best suited with Prisma Colour markers but pencil crayons are still an option. Again, think outside the box when it comes to colour, artistic style (smooth, rough, textured, etc.), and cropping (a small object centred on the page can be boring)

3. THINKING INSIDE THE SHAPE

Create a piece by merging two scenes into one. Create a scene, or draw an object using only an outline, fill in that object with another scene or another picture. Think about using the negative space in an interesting way.



EVALUATION

| | | |
|---|------------------------|--|
| KU: Work is complete, includes all required components and is submitted on time. | 0 1 2 3 4 5 6 7 8 9 10 | |
| TH: Thoughtful composition with interesting use of elements and principles. | 0 1 2 3 4 5 6 7 8 9 10 | |
| APP: Medium is used with a high-degree of proficiency and shows visual impact. | 0 1 2 3 4 5 6 7 8 9 10 | |
| COM: Critique is clear, thoughtful and reflective. All required components of the piece are discussed. | 0 1 2 3 4 5 6 7 8 9 10 | |
